

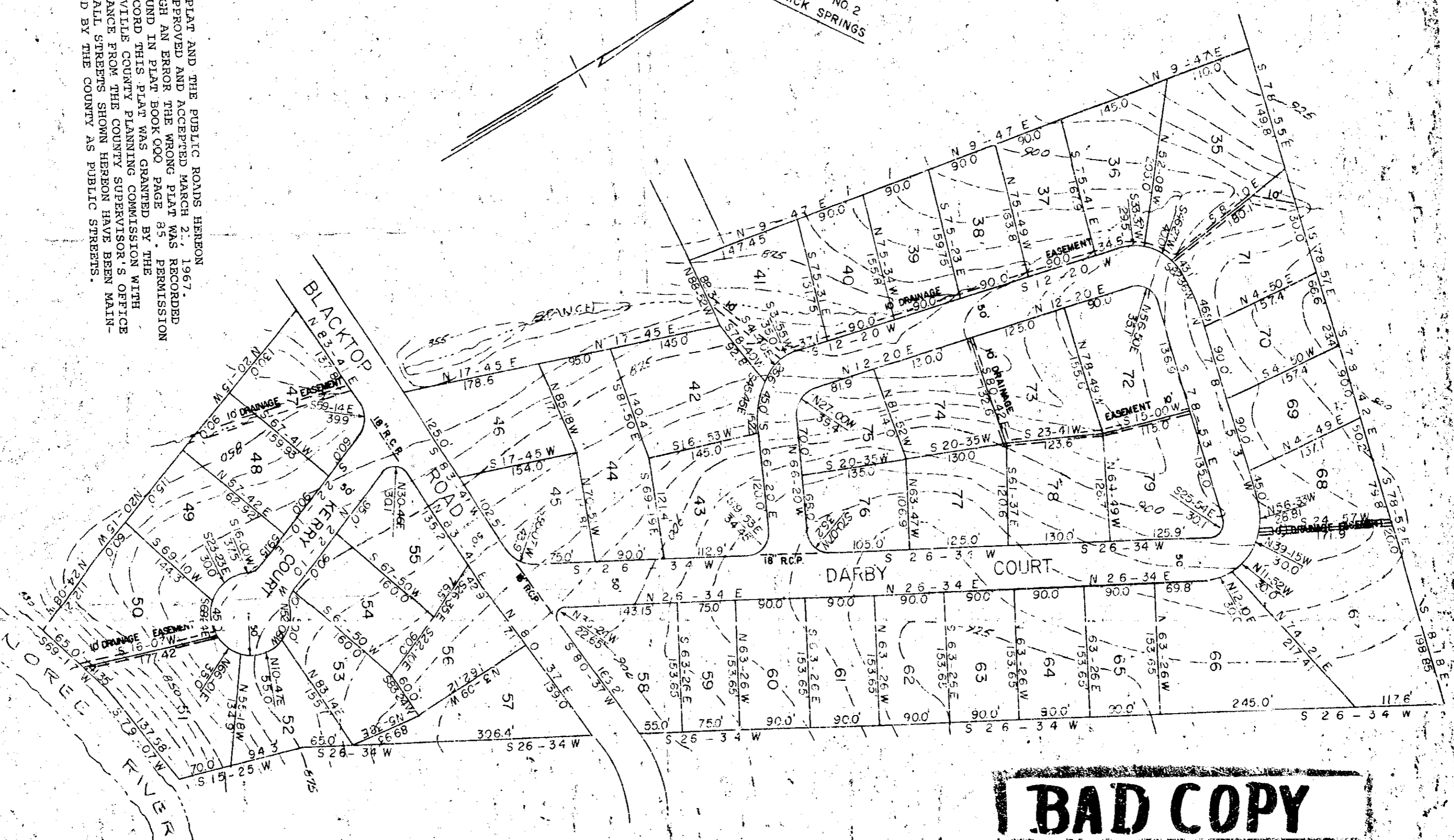
Plat Book-UUU-Page 91 B

SECT. NO. 2
CHICK SPRINGS

THIS PLAT AND THE PUBLIC ROADS HEREON WAS APPROVED AND ACCEPTED MARCH 2, 1967. THROUGH AN ERROR THE WRONG PLAT WAS RECORDED AS FOUND IN PLAT BOOK 000 PAGE 85. PERMISSION TO RECORD THIS PLAT WAS GRANTED BY THE GREENVILLE COUNTY PLANNING COMMISSION WITH ASSURANCE FROM THE COUNTY SUPERVISOR'S OFFICE THAT ALL STREETS SHOWN HEREON HAVE BEEN MAINTAINED BY THE COUNTY AS PUBLIC STREETS.

THIS PLAT IS NOT A SUBDIVISION AS DEFINED BY THE GREENVILLE COUNTY SUBDIVISION REGULATIONS.

6/13/1969
[Signature]
 Planning Director of Greenville County Planning Commission



Filed This 2 day of July 1969
 And Recorded in Vol. 1111 Page 91 at 2:46 P.
[Signature]
 Register Marie ... Greenville County S. C.

BAD COPY

SECTION NO. 3
CHICK SPRINGS
 TAYLORS, SOUTH CAROLINA
 SCALE 1"=100
 MARCH 21, 1967

PIEDMONT ENGINEERS & ARCHITECTS
 GREENVILLE, SOUTH CAROLINA

JUL 2 1969
 FILED
 GREENVILLE CO. S. C.
 JUL 2 2 46 PM '69
 OLLIE FARNSWORTH
 R.M.C.

1111-91

17-1-16